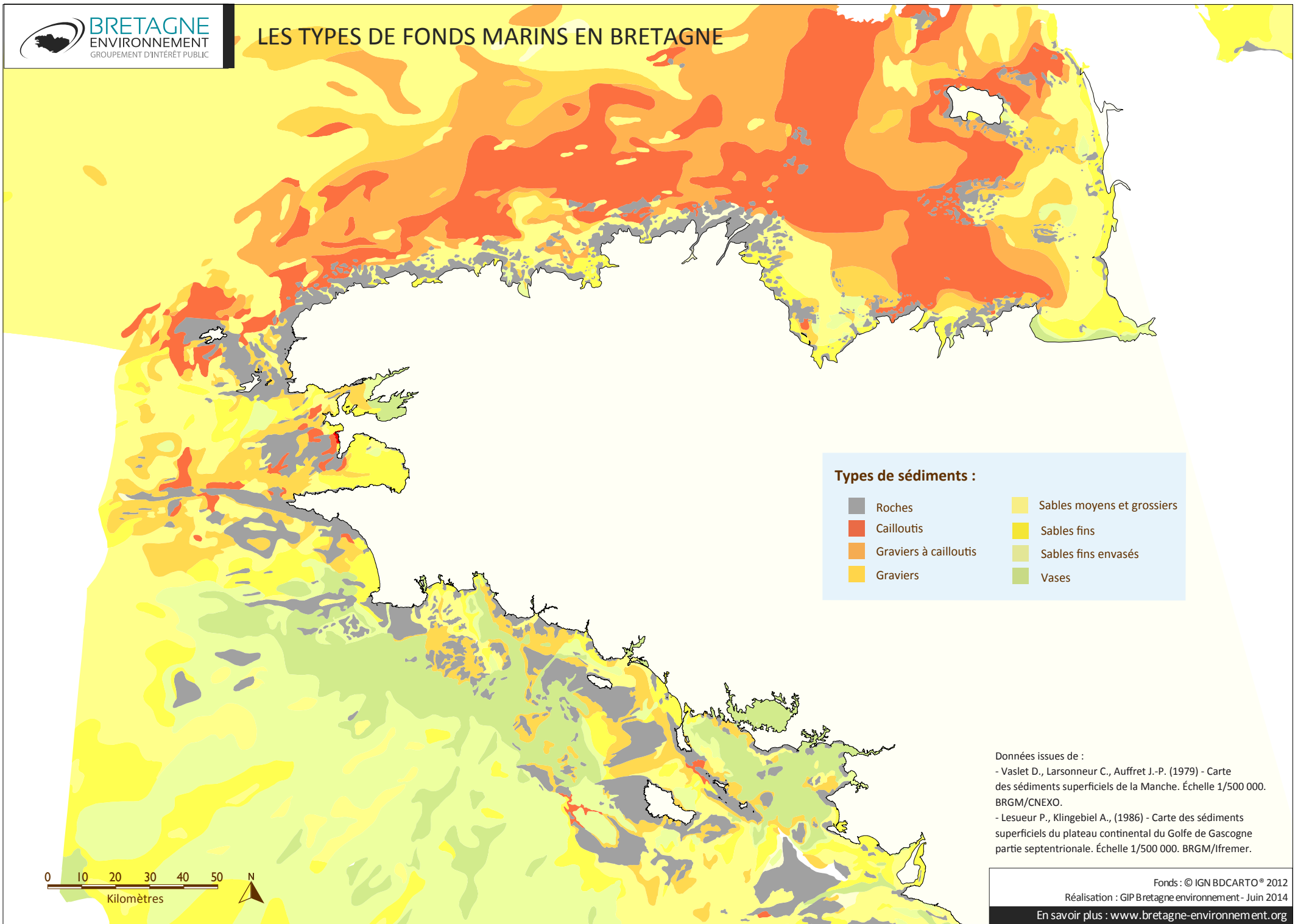





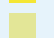




## LES TYPES DE FONDS MARINS EN BRETAGNE



### Types de sédiments :

 Roches	 Sables moyens et grossiers
 Cailloutis	 Sables fins
 Gravier à cailloutis	 Sables fins envasés
 Gravier	 Vases

### Données issues de :

- Vaslet D., Larssonneur C., Auffret J.-P. (1979) - Carte des sédiments superficiels de la Manche. Échelle 1/500 000. BRGM/CNEXO.

- Lesueur P., Klingebiel A., (1986) - Carte des sédiments superficiels du plateau continental du Golfe de Gascogne partie septentrionale. Échelle 1/500 000. BRGM/Ifremer.

